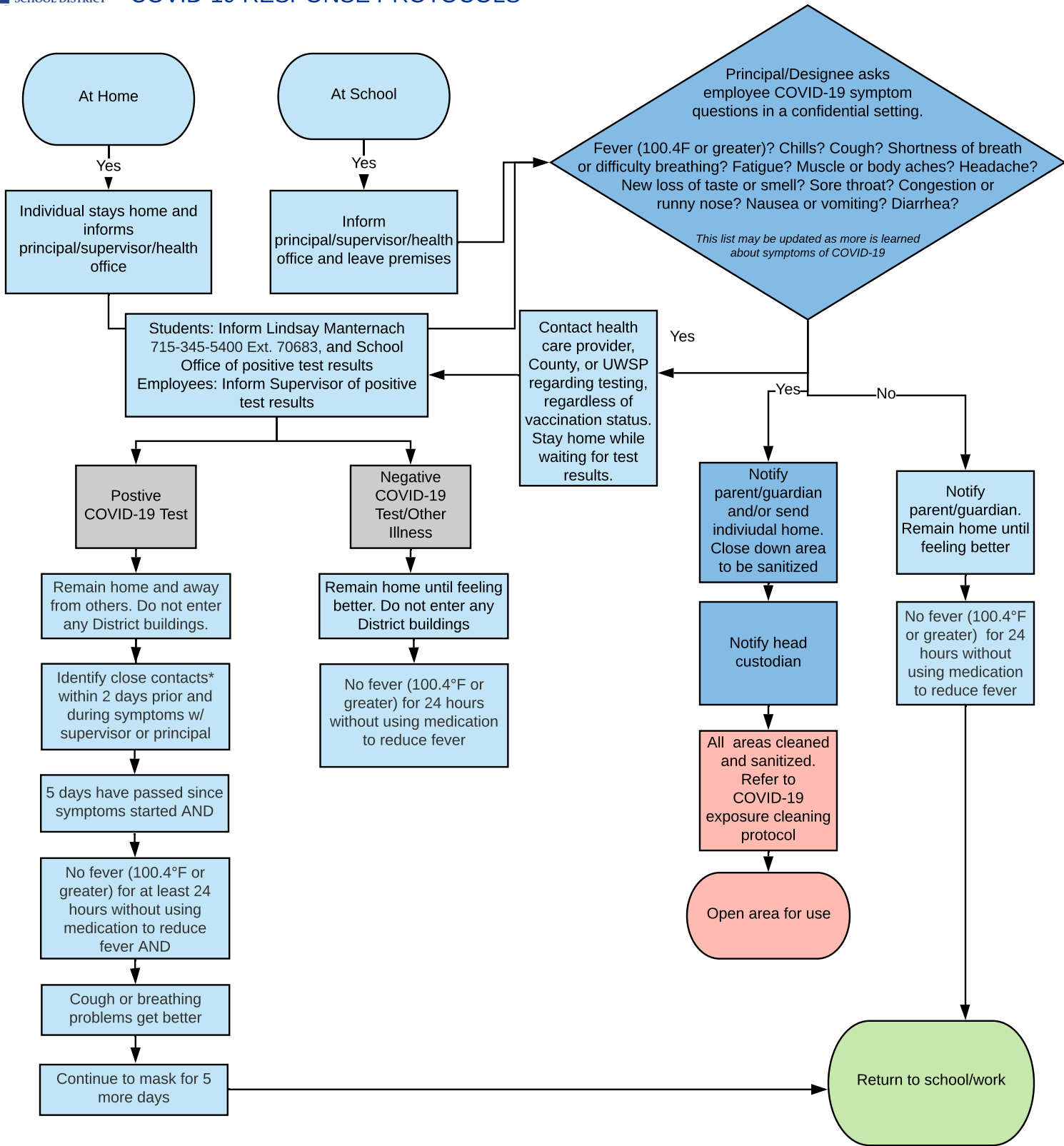


# INDIVIDUAL FEELS SICK COVID-19 RESPONSE PROTOCOLS



Individual Who Feels Sick

Custodial Services

Principal/Supervisor

*\*Close Contact for adults is defined as contact within 6 feet of an individual with a confirmed case of COVID-19 for 15 consecutive minutes or longer. Close Contact for students is defined as contact within 3 feet of an individual with a confirmed case of COVID-19 for 15 consecutive minutes or longer.  
Updated January 25, 2022 | SPASD*