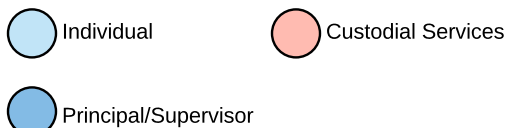
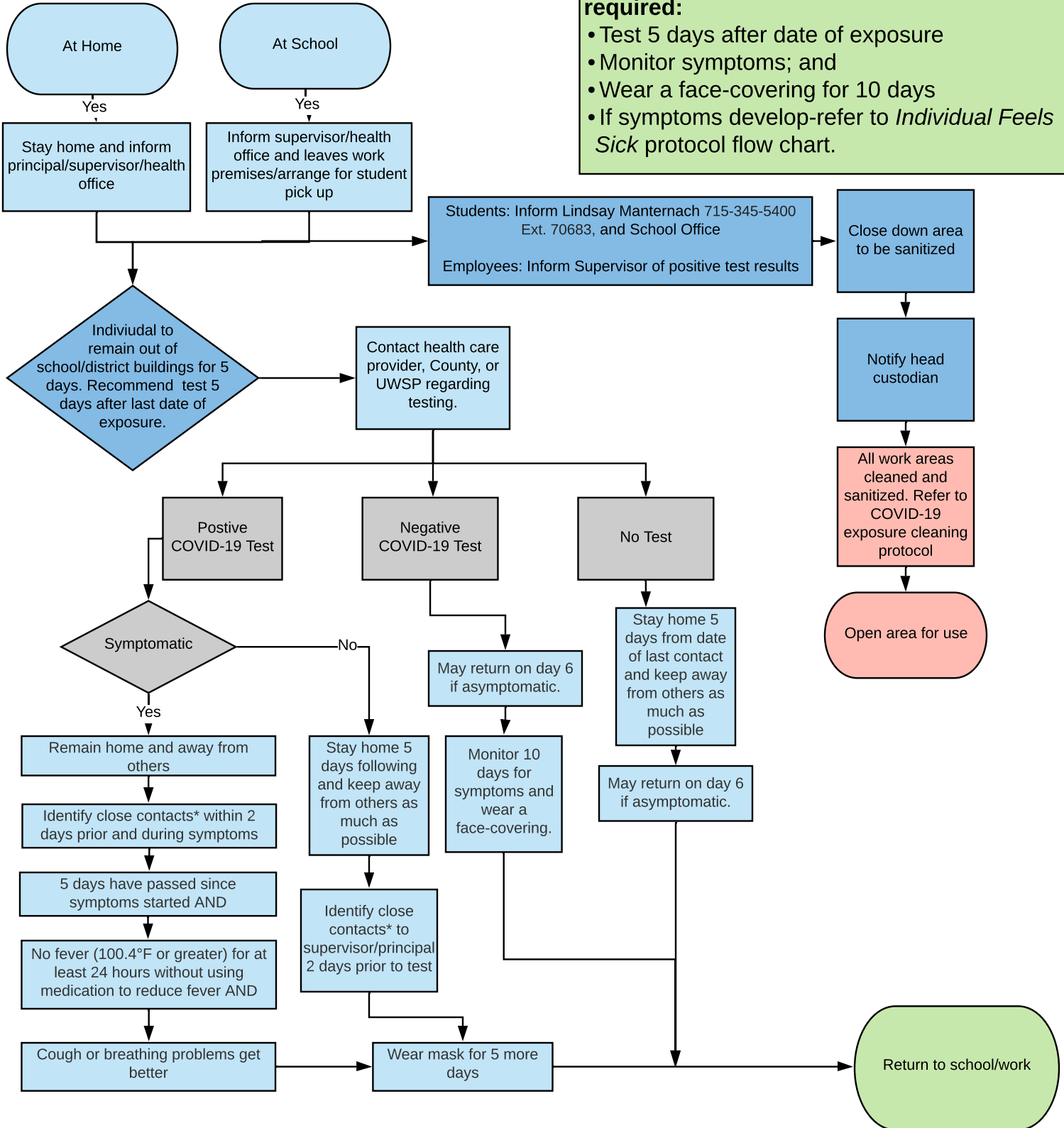


# CLOSE CONTACT\* WITH CONFIRMED COVID-19 INDIVIDUAL COVID-19 RESPONSE PROTOCOLS

If the individual HAS NOT been fully vaccinated/up to date for COVID-19:

**If the individual has been fully vaccinated/up to date (as defined by the CDC) for COVID-19 and is asymptomatic, no quarantine is required:**

- Test 5 days after date of exposure
- Monitor symptoms; and
- Wear a face-covering for 10 days
- If symptoms develop- refer to *Individual Feels Sick* protocol flow chart.



*\*Close Contact for adults is defined as contact within 6 feet of an individual with a confirmed case of COVID-19 for 15 consecutive minutes or longer. Close Contact for students is defined as contact within 3 feet of an individual with a confirmed case of COVID-19 for 15 consecutive minutes or longer.*  
 Updated January 19, 2022 | SPSPS